

FOLLOWING A RESEARCH CAREER PATH: HOW TO DO IT AND LIKE IT!

Professor Robyn Keast

CRN Program Leader

SCU Business School Research Week

Why do research?

- Satisfy intellectual curiosity & better understand things
- Research generates new knowledge, solves real world problems, helps improve communities, business & government outcomes
- **To be at the forefront of an exciting, technical field**
- Enhances employment options /career progression
- Publishing
- Part of broader research & learning community
- Fun, travel and expanded opportunities!!!
- **To always be learning new things**
- •Research skills can be used in all facets of life

Getting involved...

- When – multiple research paths
 - Honours, Masters, PhD, DBA, Research internships
- Existing research is available to link into
 - e.g. CRN, CRCs, ARCs, commercial research & consultancy
- Involve self in existing projects & identify areas of interest
 - Via research projects/programs & individual researchers
 - Industry
 - Grants – scholarships available

Choosing a research problem

- **The problem should be important**
- **Problem should hold your personal interest**
- **Problem should have depth, in terms of aspects possibly available for investigation**
- **Problem might come from questioning existing literature**

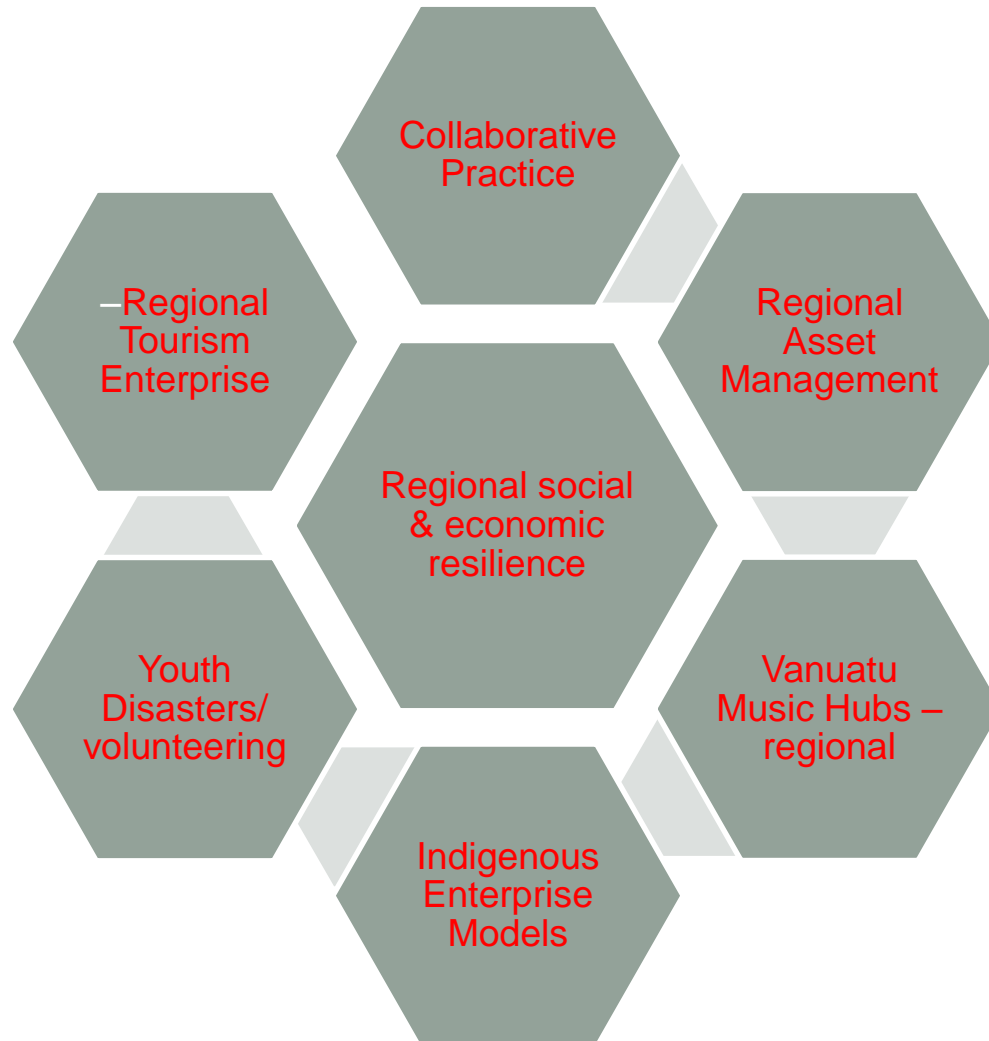
Collaborative Research Network – Policy & Planning for Regional Sustainability

- funding program announced in the 2009-10 federal budget in response to the Bradley Review of Australian Higher Education.
- It is part of a broader reform agenda to drive excellence in research.
- aims to build and extend the research capacity and capability of regional universities through strategic partnership with research intensive universities with complementary strengths and capabilities.

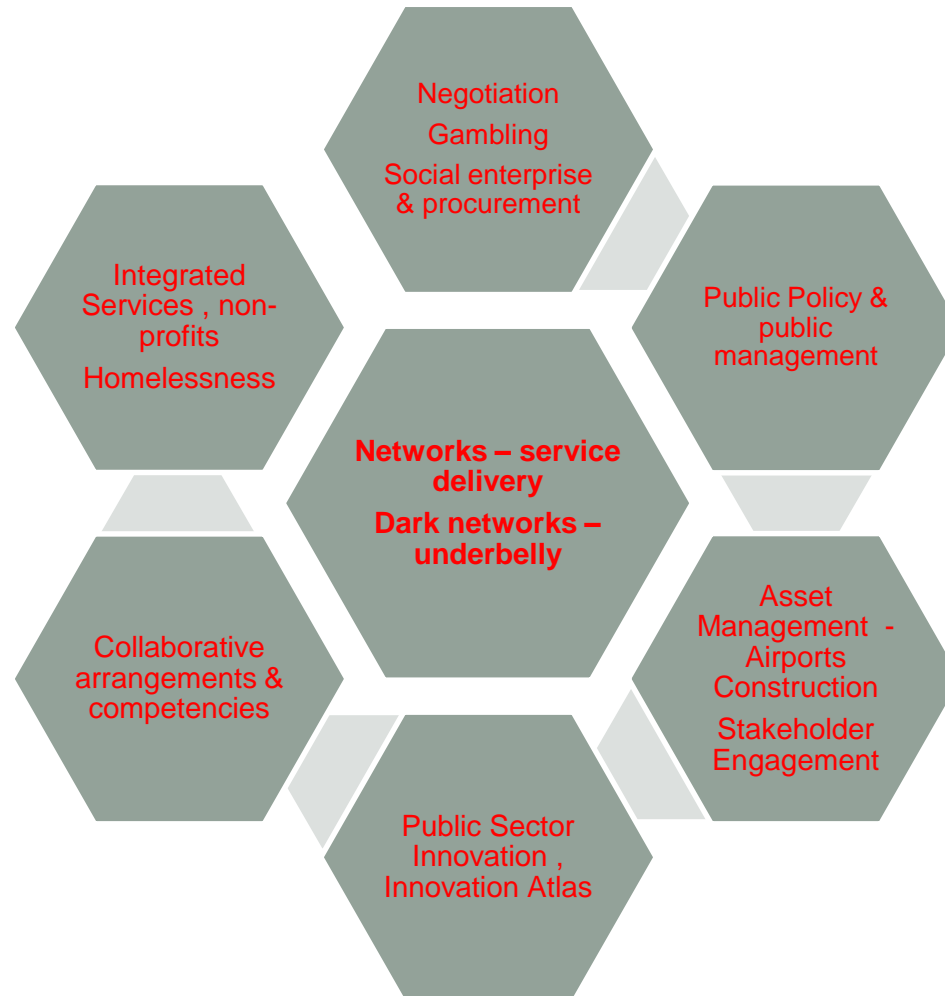
CRN Elements & partners

- Element 1: SCU Children & Young People: Centre for Children & Young People/ Social Policy Research Centre, UNSW
- Element 2: Nursing, University of Sydney (Nursing)
- Element 3: Economic Sustainability, SCU Business School, CTLW : Institute for Social, Sciences Research
 - Linked to existing research projects (data), research training, mentoring, participation in symposia & conferences

Element 3: Economic Sustainability

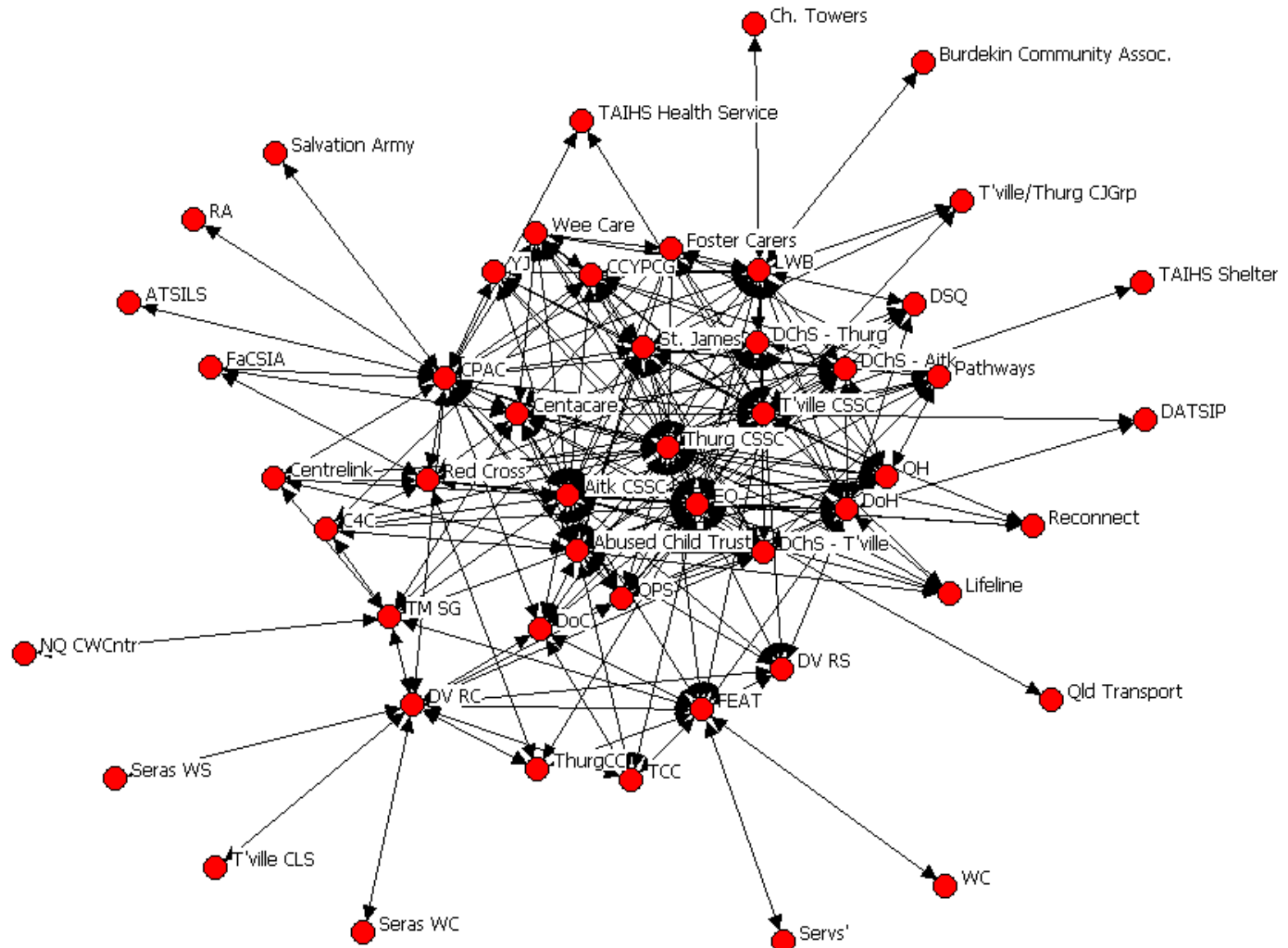


Some of my research projects

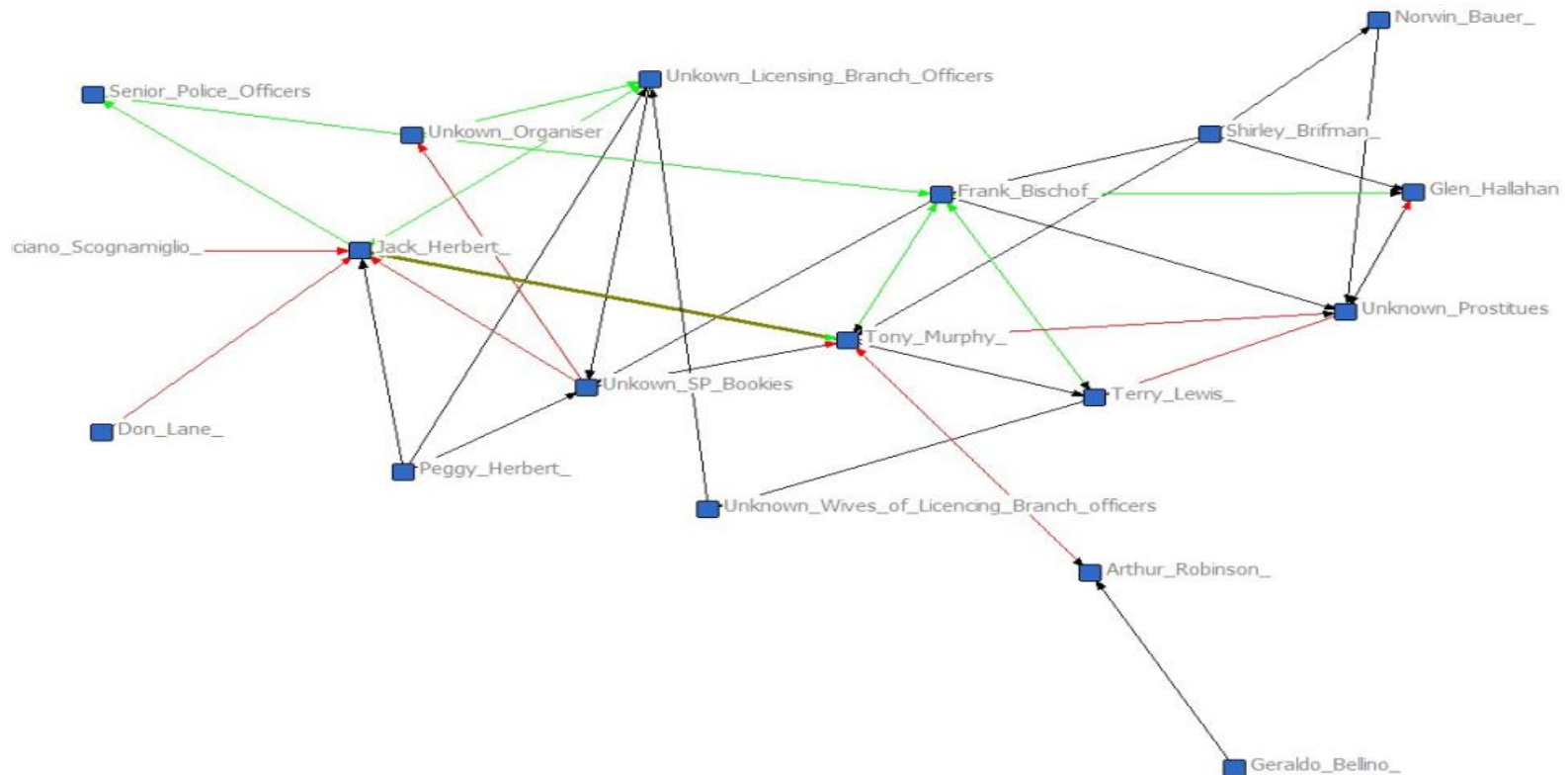


Bright & dark networks –

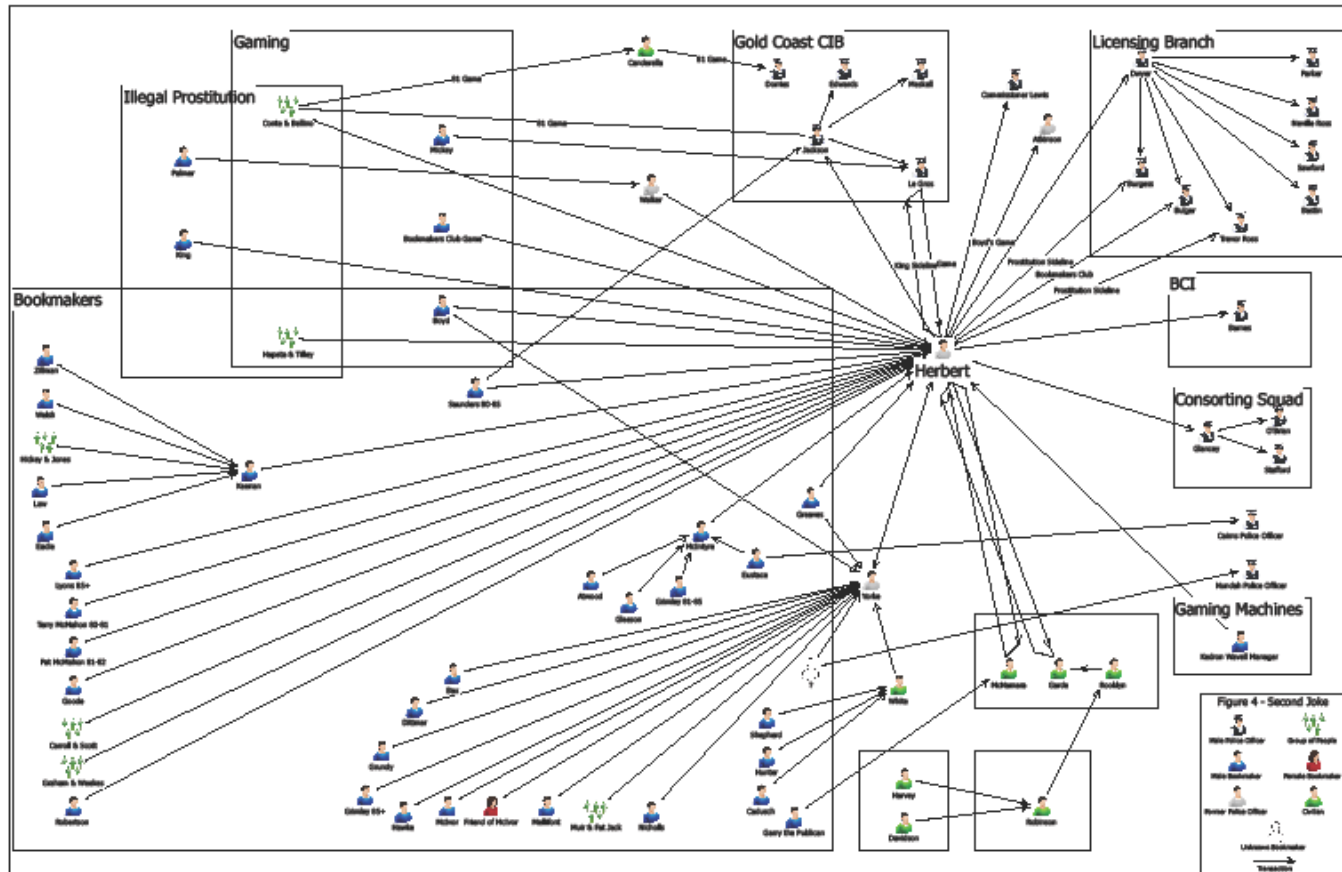
Joint planning & programming



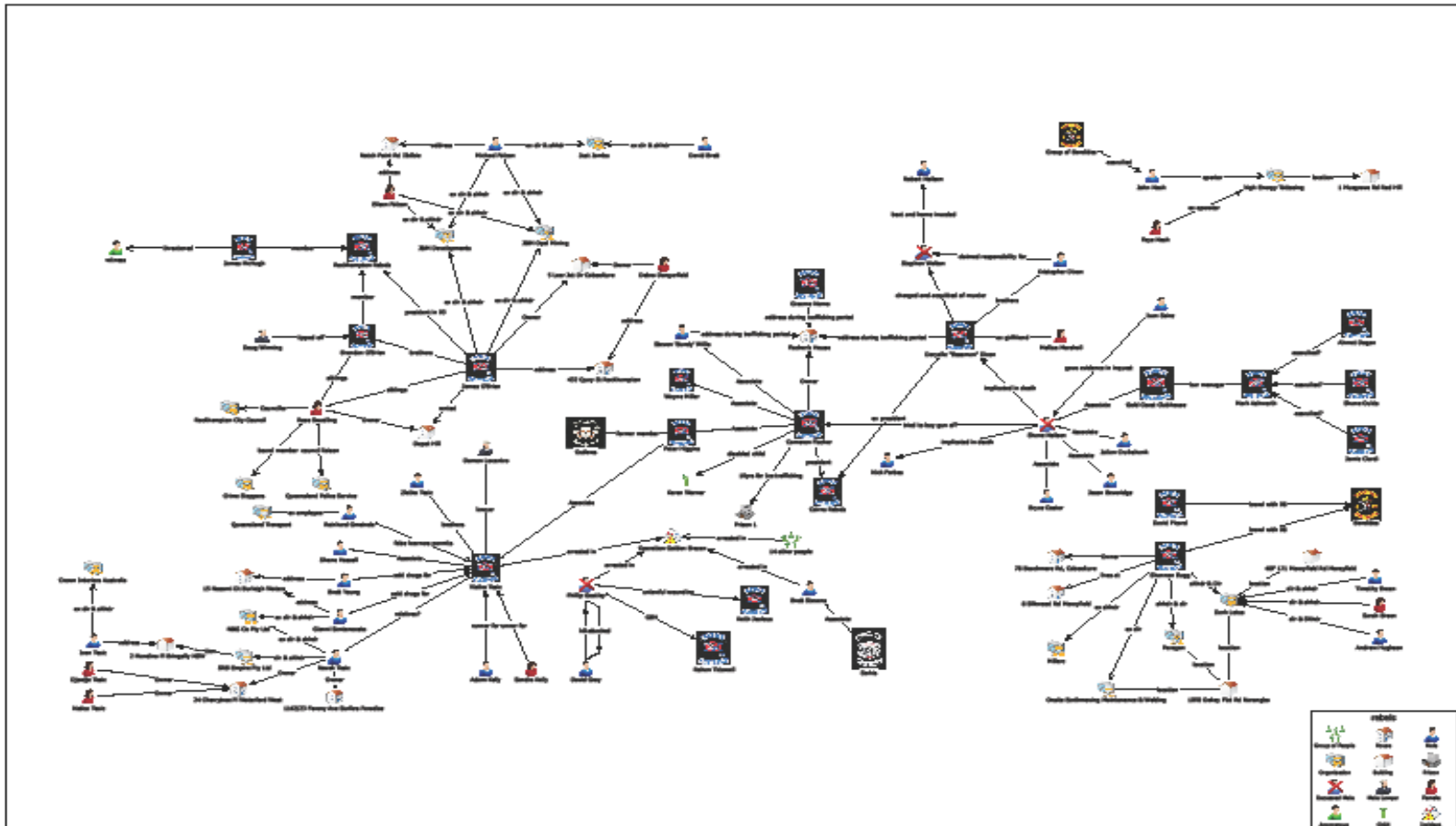
The Joke – Police Corruption in Qld - SNA



The Joke – Police Corruption in Qld



Outlaw Motorcycle Gangs - Rebels Gold Coast



Developing a research agenda

- Leverage off existing research projects
- Identify emergent problem spaces – hot topics
- Expand on work that has been done
- Leverage off your strengths – competencies, contacts & skills

Approaches:

- Focused & narrow
- Eclectic & broad

Contributing to knowledge creation

- Not just doing research + generating findings
- Reconfiguring findings to generate new insights
- Applied contributions – policy, funding, services etc
- Important to present findings in appropriate styles & mediums
 - Language
- Presenting new and different forms
 - Fact Sheets, Summary Sheets & Blogs
- **Re-examine your research at regular intervals, to see how it can be applied & still relevant**

Research ethos

- **Not an isolated researcher – part of a research community**
- **Support each other – personal & research**
- **Attend workshops, especially those with work-in-progress presentations**
- **Confirmations, training & workshops**
- **Provide feedback – papers, proposals**